



Glycerate Kinase Polyclonal Antibody

Catalog No	YP-Ab-14761
Isotype	IgG
Reactivity	Human;Mouse;Rat
Applications	WB;IHC;IF;ELISA
Gene Name	GLYCK
Protein Name	Glycerate kinase
Immunogen	The antiserum was produced against synthesized peptide derived from human GLYCK. AA range:101-150
Specificity	Glycerate Kinase Polyclonal Antibody detects endogenous levels of Glycerate Kinase protein.
Formulation	Liquid in PBS containing 50% glycerol, 0.5% BSA and 0.02% sodium azide.
Source	Polyclonal, Rabbit,IgG
Purification	The antibody was affinity-purified from rabbit antiserum by affinity-chromatography using epitope-specific immunogen.
Dilution	Western Blot: 1/500 - 1/2000. Immunohistochemistry: 1/100 - 1/300. Immunofluorescence: 1/200 - 1/1000. ELISA: 1/20000. Not yet tested in other applications.
Concentration	1 mg/ml
Purity	≥90%
Storage Stability	-20°C/1 year
Synonyms	GLYCK; HBEBP4; LP5910; Glycerate kinase; HBeAg-binding protein 4
Observed Band	60kD
Cell Pathway	[Isoform 1]: Cytoplasm .; [Isoform 2]: Cytoplasm. Mitochondrion .
Tissue Specificity	Widely expressed.
Function	catalytic activity:ATP + (R)-glycerate = ADP + 3-phospho-(R)-glycerate.;disease:Defects in GLYCK are the cause of D-glyceric acidemia [MIM:220120]. It is characterized by nonketotic hyperglycinemia with the excretion of D-glyceric acid in the urine and the presence of this substance in the serum.;similarity:Belongs to the glycerate kinase type-2 family.;tissue specificity:Widely expressed.,
Background	This locus encodes a member of the glycerate kinase type-2 family. The encoded enzyme catalyzes the phosphorylation of (R)-glycerate and may be involved in serine degradation and fructose metabolism. Decreased activity of the encoded enzyme may be associated with the disease D-glyceric aciduria. Alternatively spliced transcript variants have been described. [provided by RefSeq, Jan 2009],



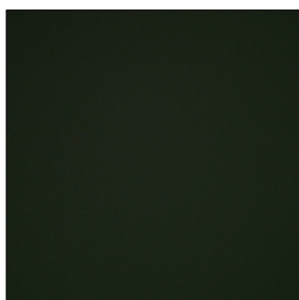
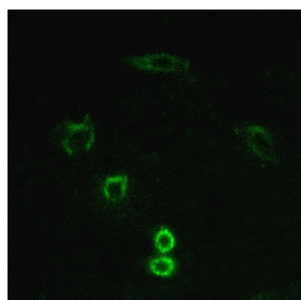
matters needing attention

Avoid repeated freezing and thawing!

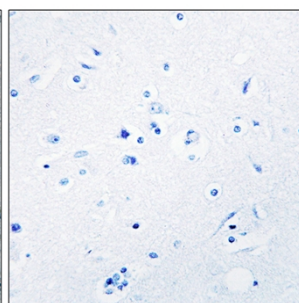
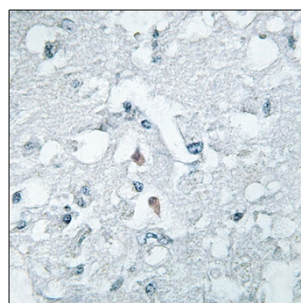
Usage suggestions

This product can be used in immunological reaction related experiments. For more information, please consult technical personnel.

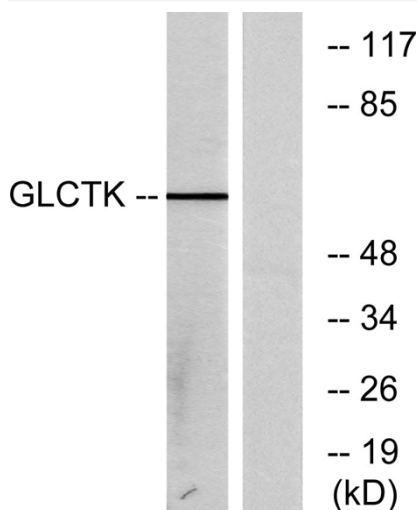
Products Images



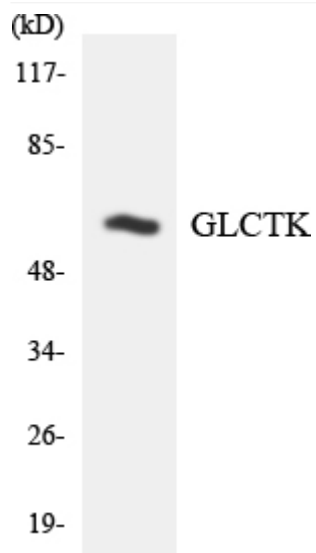
Immunofluorescence analysis of A549 cells, using GLCTK Antibody. The picture on the right is blocked with the synthesized peptide.



Immunohistochemistry analysis of paraffin-embedded human brain tissue, using GLCTK Antibody. The picture on the right is blocked with the synthesized peptide.



Western blot analysis of lysates from NIH/3T3 cells, using GLCTK Antibody. The lane on the right is blocked with the synthesized peptide.



Western blot analysis of the lysates from HUVECcells using GLCTK antibody.